

DUST TIGHT

Martin Dust Tight (MDT™) Inspection Doors NOW AVAILABLE



- Moisture and Dust Tight
- Heavy Duty Construction
- Installs Easily on Existing Equipment
- Simple Operation
- Stocked in 304 SS and Carbon Steel



The *Martin* dust tight inspection door is ideal for visual inspection in dusty applications. Once installed, the *Martin* inspection door will give you years of trouble free service. It allows efficient access by authorized personnel while maintaining security with a latch that can be bolted or locked. The door comes with a poured black rubber door seal for chemical resistance and long life. The hinge and latch on all models are laser cut of 304 SS material for precision and corrosion resistance.

The MDT doors can be supplied with an expanded metal screen welded inside the opening to prevent physical access to moving parts.

These doors are available from stock in many sizes. Custom sizes can be manufactured to fit your specific needs. Call your local *Martin* Distributor for more information.

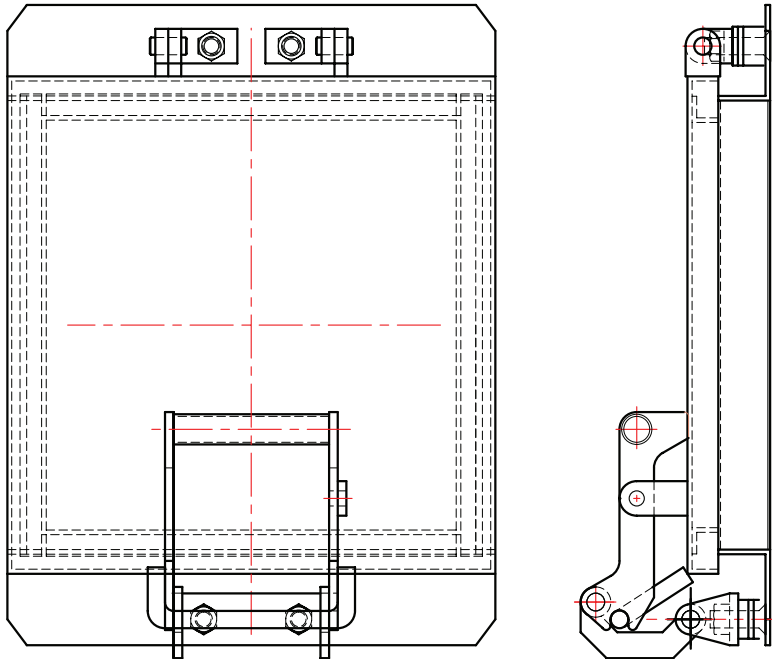


Martin SPROCKET & GEAR, INC.

www.martinsprocket.com • 817-258-3000

"Where dependability is a tradition...and exceptional service is nothing new!"

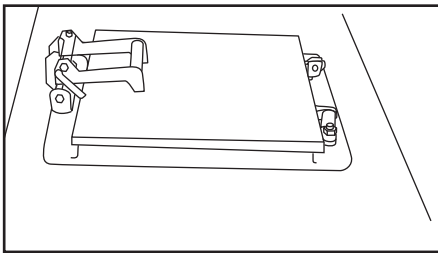
MDT Doors Available from Stock



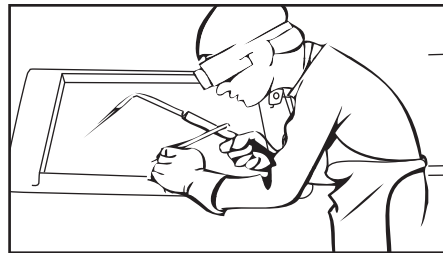
Part Number	Size	Description
0909PG-ID	9"X9"	C.S. construction with S.S.Hinge
1010PG-ID	10"X10"	C.S. construction with S.S.Hinge
1212PG-ID	12"X12"	C.S. construction with S.S.Hinge
1414PG-ID	14"X14"	C.S. construction with S.S.Hinge
1616PG-ID	16"X16"	C.S. construction with S.S.Hinge
0909PG-ID-SS	9"X9"	S.S. construction with S.S.Hinge
1010PG-ID-SS	10"X10"	S.S. construction with S.S.Hinge
1212PG-ID-SS	12"X12"	S.S. construction with S.S.Hinge
1414PG-ID-SS	14"X14"	S.S. construction with S.S.Hinge
1616PG-ID-SS	16"X16"	S.S. construction with S.S.Hinge

Easy to Install

Martin MDT™ Doors are easily installed on existing equipment.

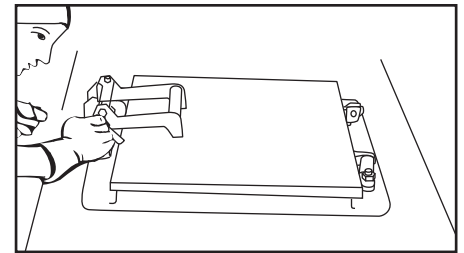


1. Identify the location where the MDT™ inspection door will be mounted. Place the door frame in the appropriate location, mark the location of cut out and remove frame.



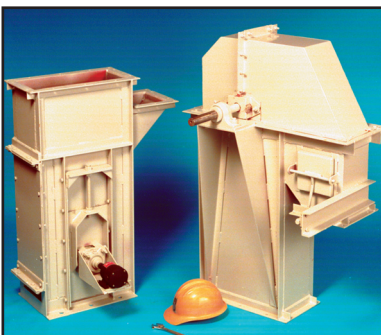
2. Carefully cut out the opening then weld the door frame into position.

LOCK AND TAG OUT ENERGY SOURCE PRIOR TO MOUNTING MDT™ INSPECTION DOOR.

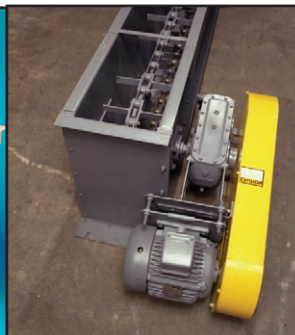


3. Once the frame has cooled, attach screen, door and hardware. Make necessary adjustments for proper closure.

Martin MDT™ Doors can be ordered pre-installed on any of our material handling systems. Ask your *Martin* representative to quote your new equipment with MDT Doors.



Bucket Elevators



Drag Conveyors



Screw Conveyors



Shaftless Screw Conveyors