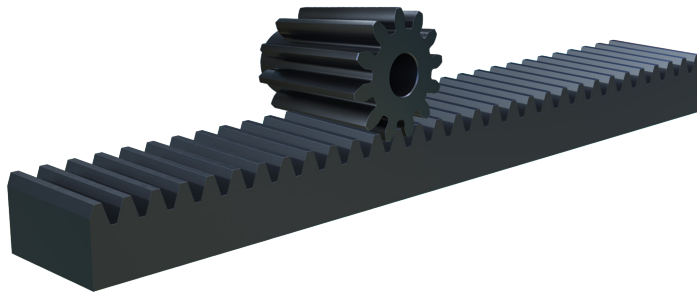




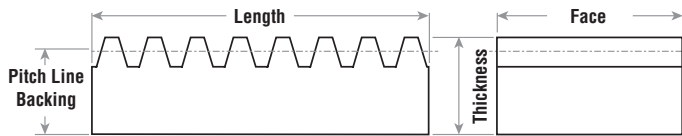
Machined Gear Rack

Martin Rack is made from low carbon cold drawn steel. It is available in 14½° and 20° pressure angle in 2, 4, and 6 foot lengths. Allowance is made for cutting and machining. Pinions to run with the rack may be selected from the Spur Gear section of the catalog. Special rack can be supplied in other materials, sizes, and pitches.



Wide Face Width Steel — 20° Pressure Angle

Part Number	Pitch	Face Width	Overall Thickness	Pitch Line Backing	App. Wt. lb/pc
R204x2	4	3 1/2	2	1.750	41.0
R204x4	4	3 1/2	2	1.750	82.0
R204x6	4	3 1/2	2	1.750	123.0
R205x2	5	2 1/2	1 1/2	1.300	22.4
R205x4	5	2 1/2	1 1/2	1.300	44.8
R205x6	5	2 1/2	1 1/2	1.300	67.2
R206x2	6	2	1 1/2	1.333	17.0
R206x4	6	2	1 1/2	1.333	34.0
R206x6	6	2	1 1/2	1.333	51.0
R208x2	8	1 1/2	1 1/2	1.375	13.8
R208x4	8	1 1/2	1 1/2	1.375	27.6
R208x6	8	1 1/2	1 1/2	1.375	41.3
R2010x2	10	1 1/4	1 1/4	1.150	9.0
R2010x4	10	1 1/4	1 1/4	1.150	18.0
R2010x6	10	1 1/4	1 1/4	1.150	27.0
R2012x2	12	1	1	0.917	6.4
R2012x4	12	1	1	0.917	12.8
R2012x6	12	1	1	0.917	19.2
R2016x2	16	3/4	3/4	0.688	3.4
R2016x4	16	3/4	3/4	0.688	6.8
R2016x6	16	3/4	3/4	0.688	10.2
R2020x2	20	1/2	1/2	0.450	0.8
R2020x4	20	1/2	1/2	0.450	1.6
R2020x6	20	1/2	1/2	0.450	2.5



Martin Stocks 14½° and 20° Spur Gears

**Rack in lengths up to 12'
available on request**