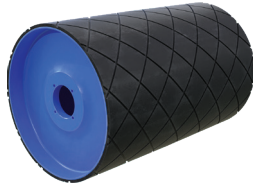




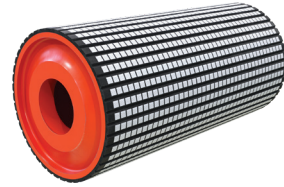
HEAVY-DUTY CONVEYOR PULLEY Nomenclature



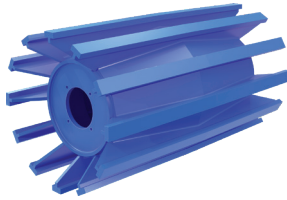
Profiled End Disc Pulleys



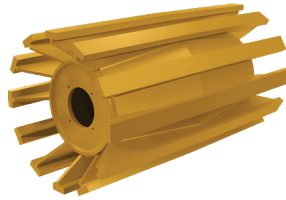
Mine Duty & Quarry Duty Drum Pulleys



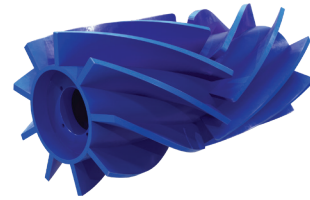
Engineered Class Drum Pulleys



Standard Duty, Mine Duty & Quarry Duty Wing Pulleys



Quarry Duty AR Wing Pulley



Clean Flight® Wing Pulley

C MES 18 36 X25 L 3 H
C S W 120 26 X25

Face

C Crown

F Flat

Pulley Type

MES Profiled End Disc Pulley

S Standard Duty

M Mine Duty

Q Quarry Duty

QAR Quarry Duty AR

Pulley Style

Leave blank for Profiled End Disc Pulley

D Drum

W Wing

CF Clean Flight®

Diameter

3 digit for most pulleys, 2 digits for Profiled End Disc Pulley

Example:

120 12.0"

065 6.5"

Face width in inches

Lagging Style

If no letter, lagging is smooth

H Herringbone

D Diamond Groove

C Ceramic

No thickness specified

S Slide Lagging

Lagging Thickness

2 1/4" 4 1/2" 6 3/4"

3 3/8" 5 5/8" 8 1"

Lagging

No suffix, no lagging

Bushing Part Number

Conveyor pulleys SHOULD use SHORT QD bushings and Profiled End Disc Pulleys will handle any MXT bushing

X25, X30,... MXT Bushing

SF, E, F, J,... QD Bushing

6207, 6315,... Keyless Locking Device

6 = Series (B106), 315 = Bushing Bore