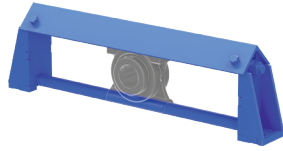




TAKE-UP FRAME Nomenclature

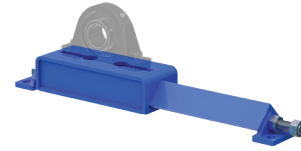


Top Angle

Take-Up Frame **MTA 20 - 12**
MTA Top Angle

Frame Size
10, 20, 30, 40, 50, 60

Travel Distance 2-3% of conveyor length in inches
12 to 24 MTA10, MTA20
12 to 48 MTA30, MTA40, MTA50, MTA60

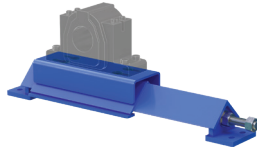


Light/Medium

Take-Up Frame **MLD 45 - 24**
MLD Light/Medium

Frame Size
10, 20, 30, 40, 45, 50

Travel Distance 2-3% of conveyor length in inches
6 to 48

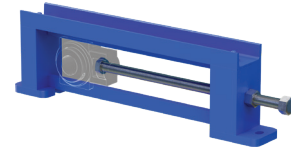


Heavy-Duty

Take-Up Frame **MHD 350 - 18**
MHD Heavy-Duty

Frame Size
200, 250, 300, 350, 400, 500

Travel Distance 2-3% of conveyor length in inches
12 to 36 MHD200, MHD250
12 to 48 MHD300, MHD350, MHD400, MHD500

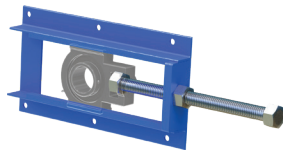


Center Pull

Take-Up Frame **MCP 408 - 20**
MCP Center Pull

Frame Size
308, 400, 408, 502, 515, 613, 810

Travel Distance 2-3% of conveyor length in inches
12 to 36

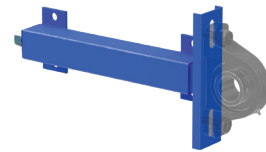


Wide Slot

Take-Up Frame **MWS 502 - 30**
MWS Wide Slot

Frame Size
300, 308, 400, 502, 515, 608

Travel Distance 2-3% of conveyor length in inches
6 to 24 MWS300, MWS308
6 to 30 MWS400, MWS502, MWS515, MWS608



Tube

Take-Up Frame **MTTU 10 - 24**
MTTU Tube

Frame Size
10, 25, 30, 35, 40, 50

Travel Distance 2-3% of conveyor length in inches
6 to 12 MTTU10 6 to 24 MTTU30 12 to 48 MTTU40, MTTU45
6 to 18 MTTU20 9 to 24 MTTU35



See bearing compatibility for the
shaft size range per bearing type

martinsprocket.com - 817.258.3000